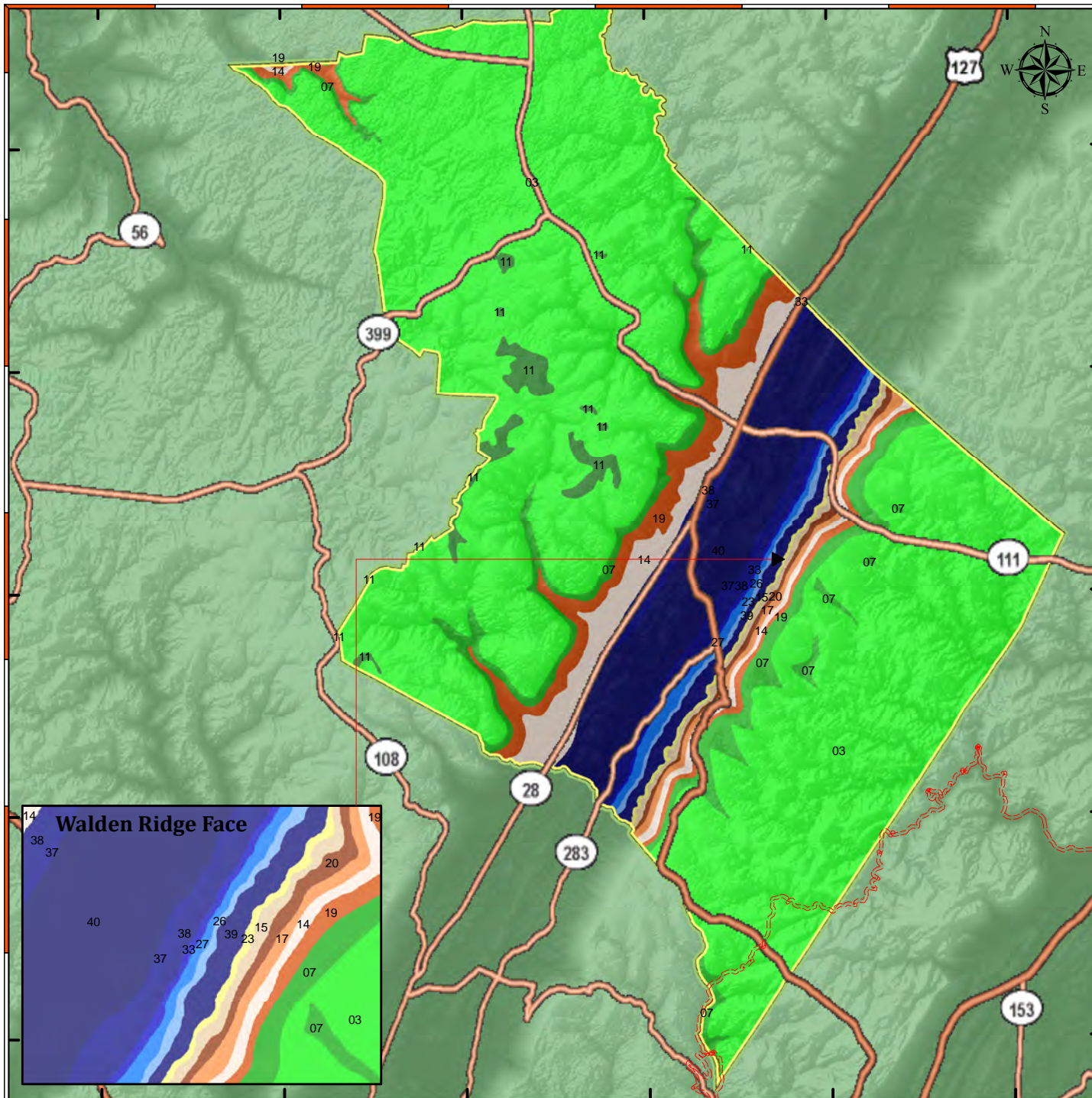


Sequatchie County Geological Formation



Sequatchie County is on the southeastern margin of Middle Tennessee. The county is almost entirely part of the Cumberland Plateau. The only exception is its northwestern tip, part of the Eastern Highland Rim. The Cumberland Plateau in this county is divided into three distinct topographic divisions. These include the plateau's tableland, Sequatchie Valley, and Walden Ridge, the regional name given to the plateau tableland east of the valley. Pennsylvanian-age sandstones, shales, and conglomerates cap the plateau tableland and Walden Ridge. In Sequatchie Valley, Ordovician-age limestones underlie the floor while Mississippian-age limestones and lesser amounts of dolomites, sandstones, shales, and chert line the walls of the valley. Mississippian-age sandstones, shales, and limestones are also found on the Highland Rim. Nearly level rock beds are found in all parts of the county.

"Tennessee Topology"
by David D. Starnes
TN Div of Geology, Bulletin 86

