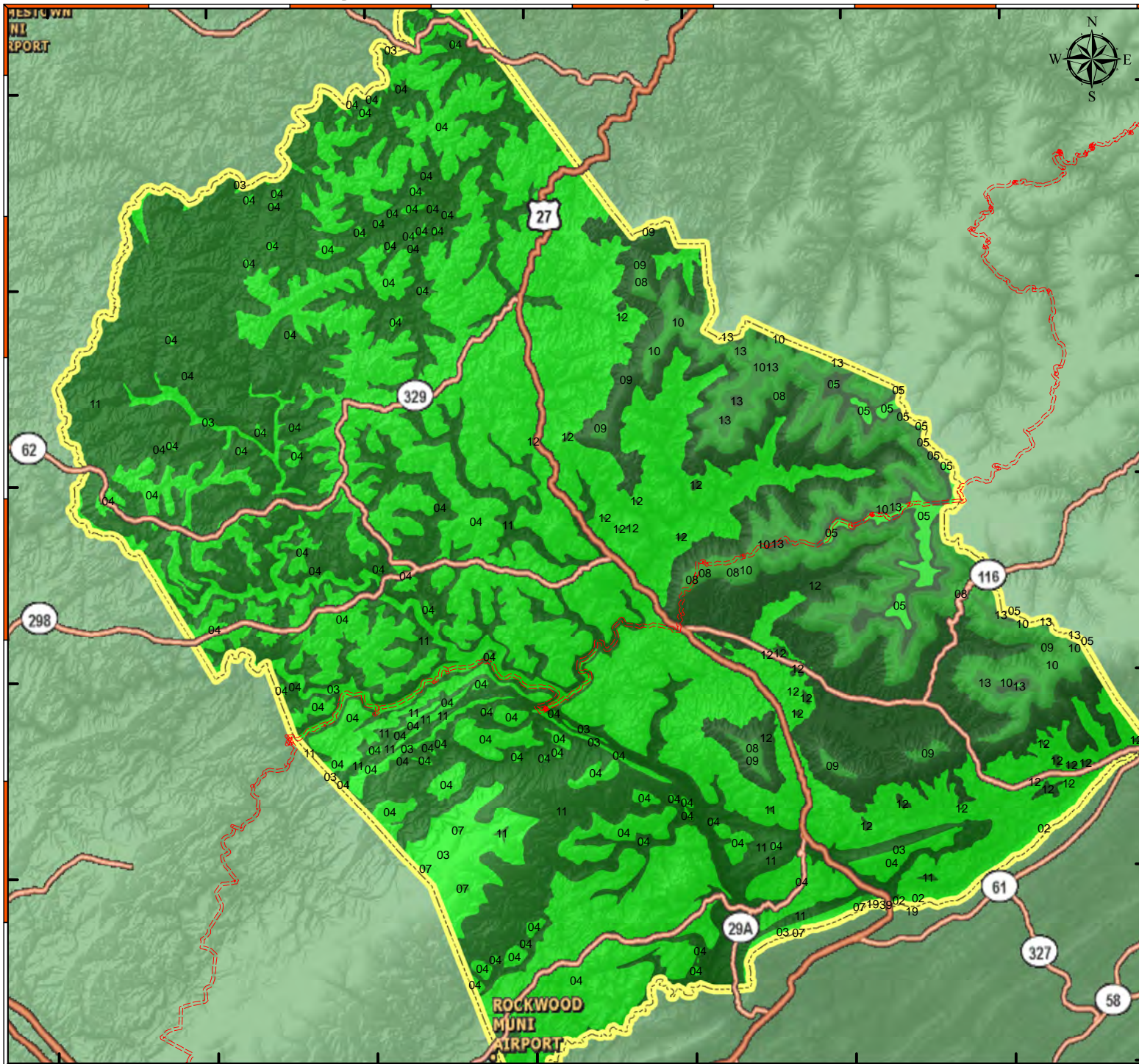
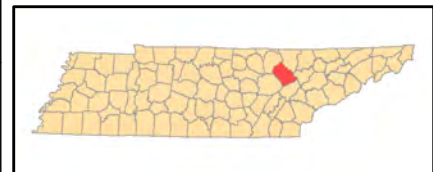


Morgan County Geological Formation



Morgan County is on the northwestern edge of East Tennessee. Although the county is entirely on the Cumberland Plateau, it has two distinct topographic divisions. Its western and central parts, or three-fourths of its total area, is an eroded tableland. The county's remaining fourth, on its southeastern side consists of a higher terrain of mountainous ridges and peaks between deeply cut stream valleys. This rugged terrain forms the southwestern side of Cumberland Mountains, a major subregion of the plateau province. Both topographic divisions are formed of nearly level beds of sandstones, conglomerates, shales, and siltstones along with several minable coal seams. All of these rock units are Pennsylvanian in age. Elevations on the plateau are generally higher along the county's western and northwestern sides, about 1,500 to 1,700 feet. They gradually lower to 1,200 to 1,400 feet in the southwestern and south-central parts, and to the east along the base of Cumberland Mountains.

"Tennessee Topology"
by David D. Starnes
TN Div of Geology, Bulletin 86



Period	Formation	Color
Pennsylvanian Period	01 Alluvial Deposits	Red
	02 Crab Orchard Mountains & Gizzard Groups	Light Green
	03 Crab Orchard Mountains & Gizzard Groups	Light Green
	04 Crooked Fork Group	Light Green
	05 Cross Mountain Formation	Light Green
	06 Fentress Formation	Light Green
	07 Gizzard Group	Light Green
	08 Graves Gap Formation	Light Green
	09 Indian Bluff Formation	Light Green
	10 Red Oak Mountain Formation	Light Green
	11 Rockcastle Conglomerate	Light Green
Ordovician Period	12 Siltstone Formation	Light Green
	13 Swell Mountain Formation	Light Green
	14 Bangor Limestone	Light Green
	15 Fort Payne Formation	Light Green
	16 Granger Formation	Light Green
	17 Monteagle Limestone	Light Green
	18 Newnan Limestone	Light Green
	19 Pennington Formation	Light Green
	20 St. Louis Limestone	Light Green
	21 Chattanooga Shale	Light Green
	22 Sneedville Limestone	Light Green
Cambrian Period	23 Brassfield Formation	Light Green
	24 Clinch Sandstone	Light Green
	25 Rockwood Formation	Light Green
	26 Bigby-Cannon Limestone	Light Green
	27 Carter Limestone	Light Green
	28 Chequamegon Dolomite	Light Green
	29 Chickamauga Group	Light Green
	30 Copper Ridge Dolomite	Light Green
	31 Junata Formation	Light Green
	32 Knox Group	Light Green
	33 Lebanon Limestone	Light Green
34 Longview Dolomite	Light Green	
35 Middle and Lower Parts of Chickamauga Group	Light Green	
36 Newala Formation, Mascot Dolomite	Light Green	
37 Pierce and Murfreesboro Limestones	Light Green	
38 Ridley Limestone	Light Green	
39 Sequatchie Formation	Light Green	
40 Wells Creek Formation	Light Green	
41 Conasauga Group	Light Green	
42 Maryville Limestone	Light Green	
43 Moynardville Limestone	Light Green	
44 Nolichucky Shale	Light Green	
45 Pumpkin Valley Shale	Light Green	
46 Rome Foundation	Light Green	