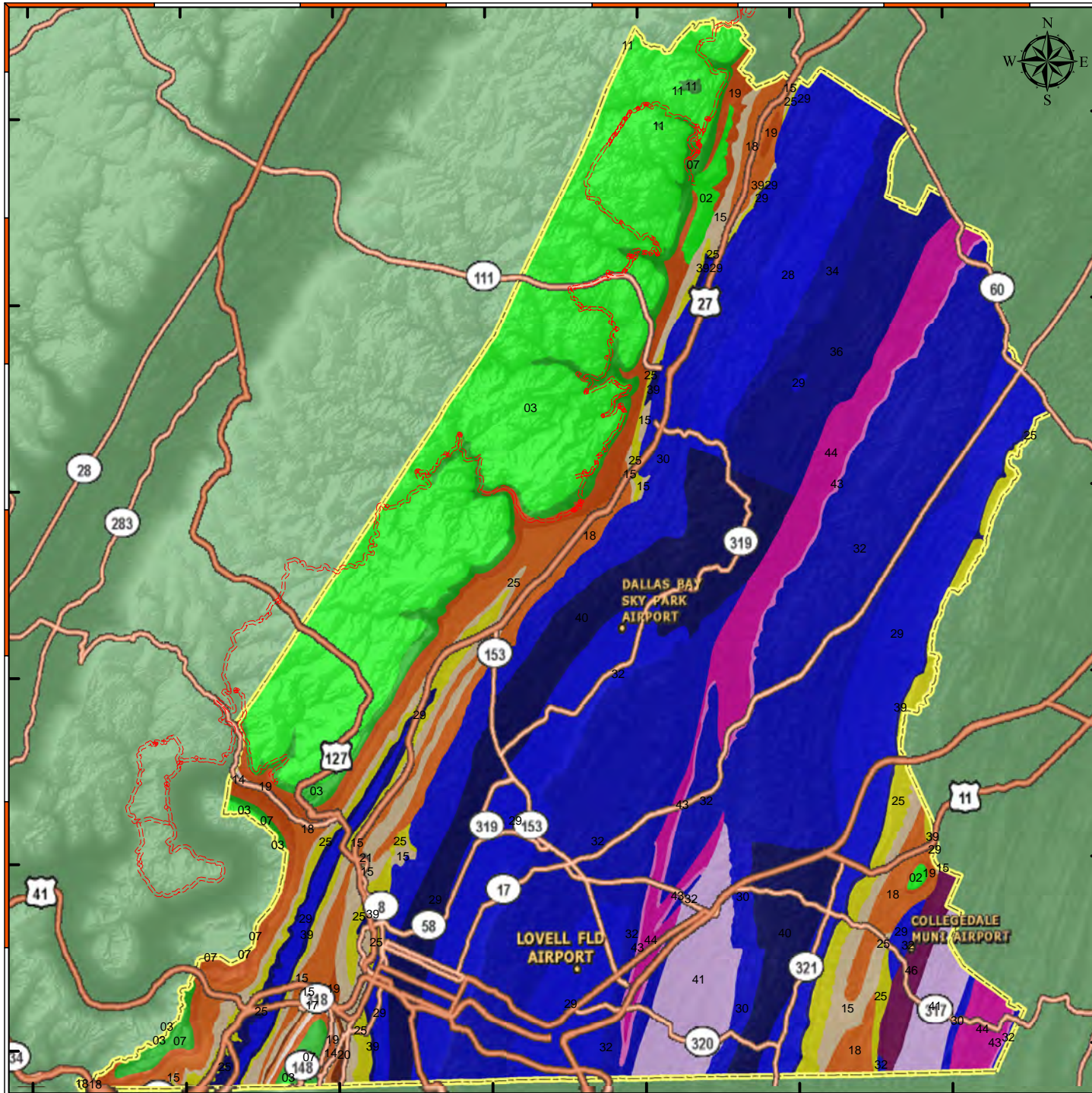


Hamilton County Geological Formation



Hamilton County is at the southwest corner of East Tennessee, bounded on the south by the Georgia State line. About one-fifth of the county is part of the Cumberland Plateau and its escarpment. Conglomerates, sandstones, siltstones, and shales, with a few thin coal seams underlie the plateau. These relatively level rocks are of Pennsylvanian age. The escarpment is lined with limestones, sandstones, and shales of Mississippian age. The rest of Hamilton County is in the Valley and Ridge, underlain by limestones, dolomites, shales, and sandstones. Rocks in this area are mostly faulted and folded and range from Cambrian to Mississippian in age. The Cumberland Plateau in Hamilton County is a linear upland about five miles wide along the western side of the county that includes parts of Walden Ridge, Raccoon, and Lookout mountains. Walden Ridge, the regional name given to the plateau in Tennessee east of Sequatchie Valley, forms the most southeastern part of the contiguous mass of the plateau in Tennessee. The average elevation of this tableland is about 1,800 feet, gradually rising westward to more than 2,000 feet along the Hamilton-Sequatchie County line.

"Tennessee Topology"
by David D. Starnes
TN Div of Geology, Bulletin 96

