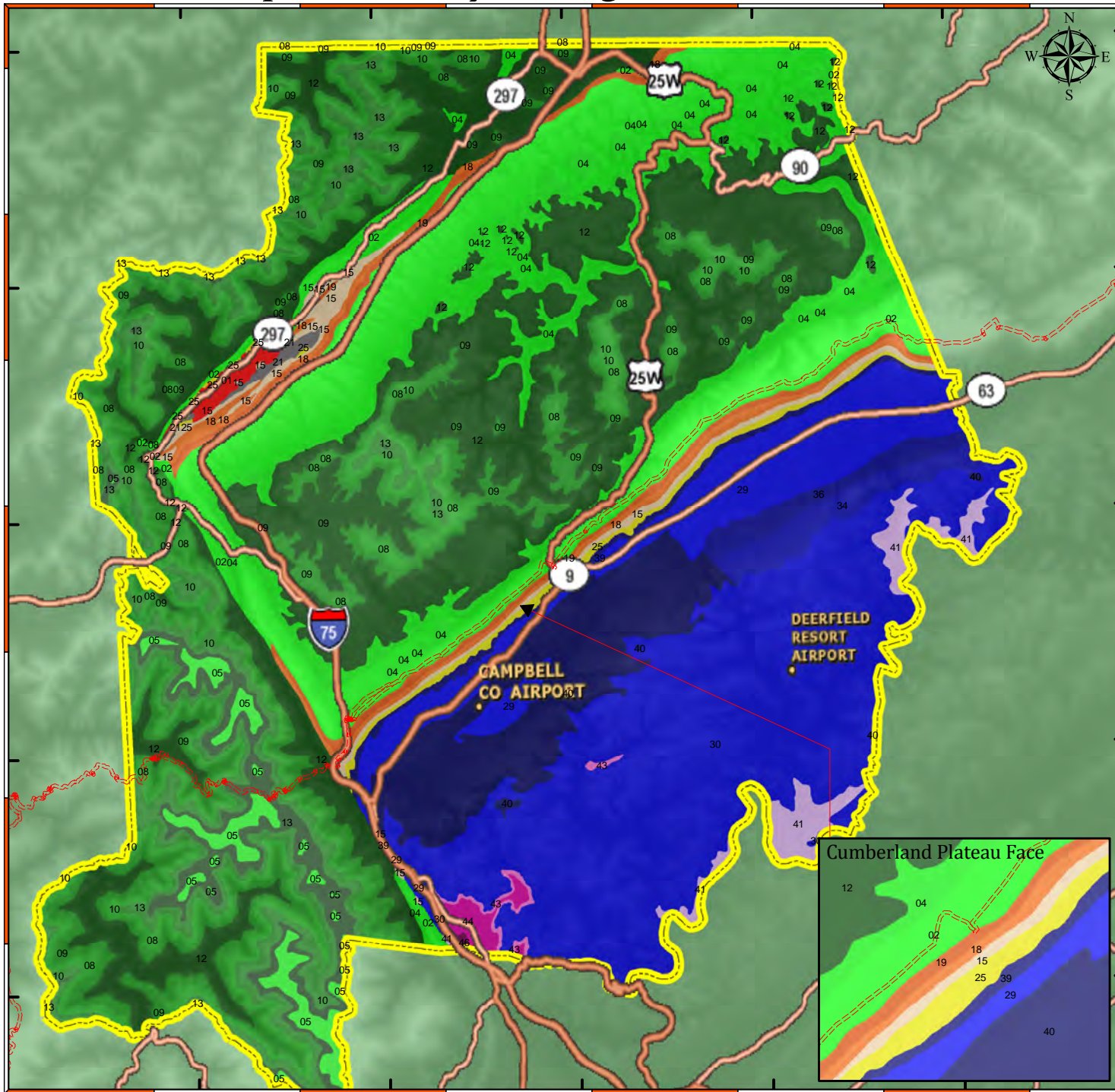


# Campbell County Geological Formation



Campbell County is in northwestern East Tennessee, bounded on the north by the Kentucky State line. About two-thirds of the county is part of the Cumberland Plateau. Underlying rock strata consist of Pennsylvanian-age conglomerates, sandstones, siltstones, and shales, with numerous coal seams of minable thickness and quality. Most of these rocks are nearly level, but some are highly folded and faulted. The remaining third of the county is in the Valley and Ridge. There, nearly horizontal beds of dolomite, limestone, sandstone, and shale underlie the province. Most of these rocks are Ordovician age, although Cambrian, Silurian, Devonian, and Mississippian units also occur in the province. In the county's southwestern corner, Cross Mountain reaches an elevation of 3,534 feet. It is the highest point between the Great Smoky Mountains and the Black Hills of South Dakota.

"Tennessee Topology"  
by David D. Starnes  
TN Div of Geology, Bulletin 86

