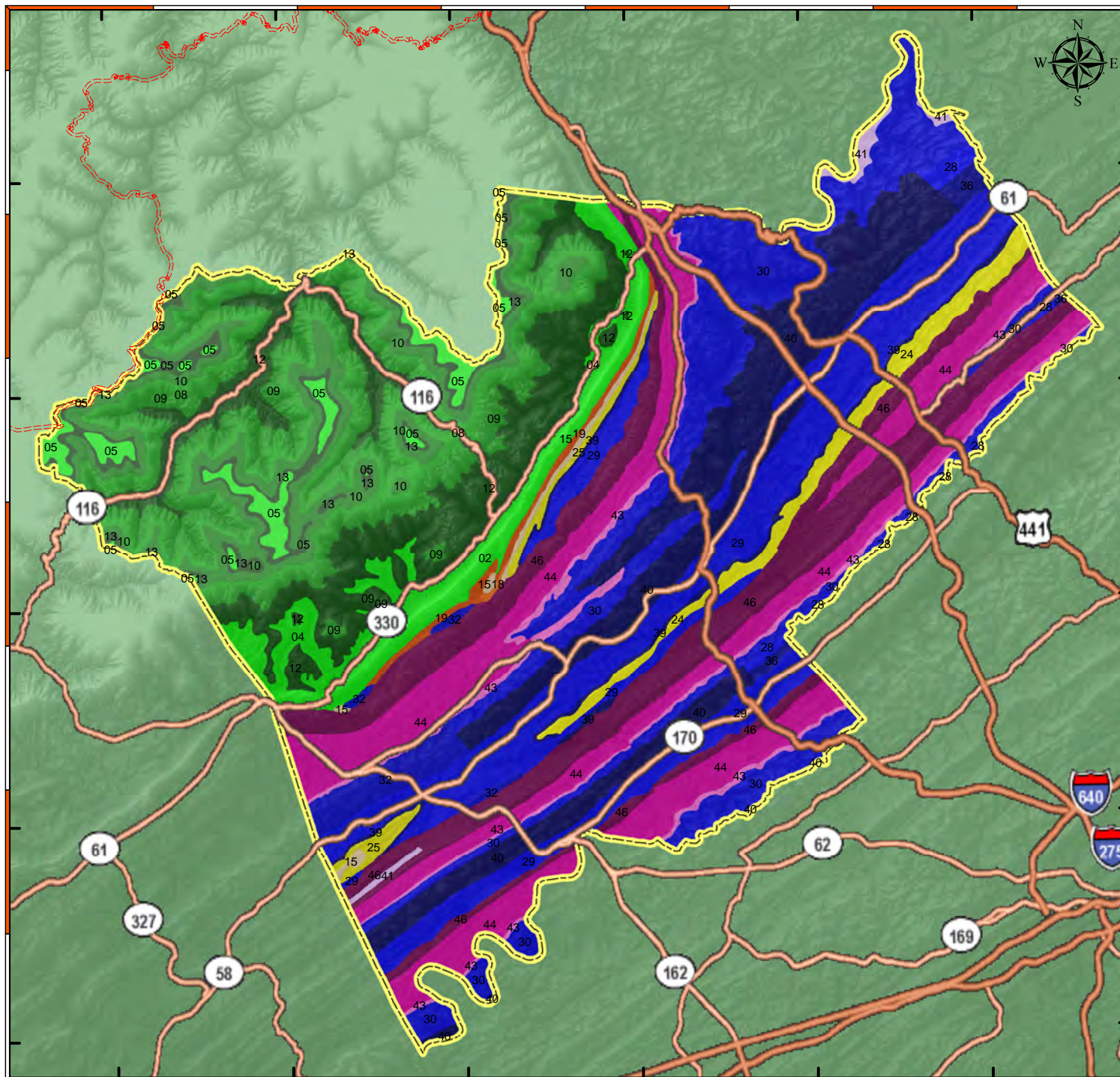


Anderson County Geological Formation



Anderson County is in northwestern East Tennessee. The county's northwestern third is part of Cumberland Mountains, a major subregion of the northern half of the Cumberland Plateau. Nearly level beds of Pennsylvanian-age sandstones, shales, and minable coal seams make up the stratigraphic units in this area. The southeastern two-thirds of the county is in the Valley and Ridge. Highly faulted and folded beds of dolomites, limestones, sandstones, and shales ranging from Cambrian to Mississippian in age underlie this part of the county. The general elevations on the crests of the ridges are 1,100 to 1,200 feet while valley floors average about 900 feet.

"Tennessee Topology"
by David D. Starnes
TN Div of Geology, Bulletin 86

